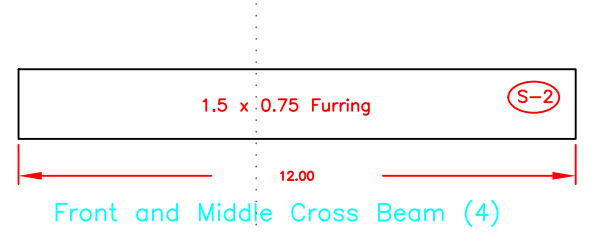
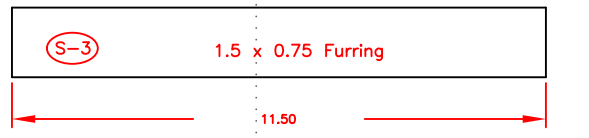


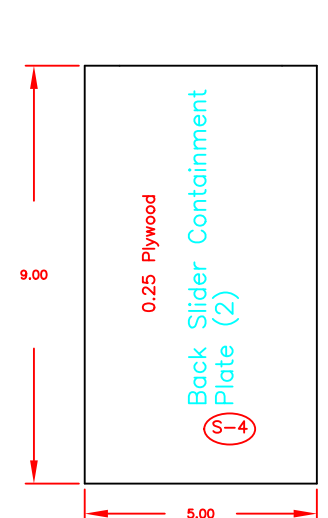
Front Trap Door



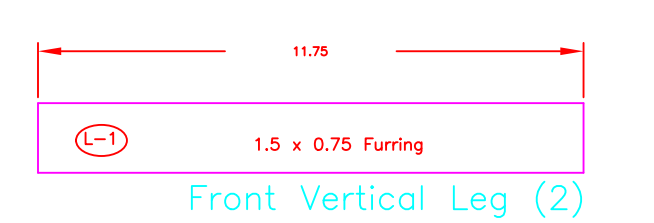
Front and Middle Cross Beam (4)



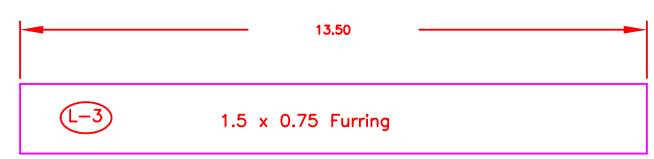
Back Cross Beam (2)



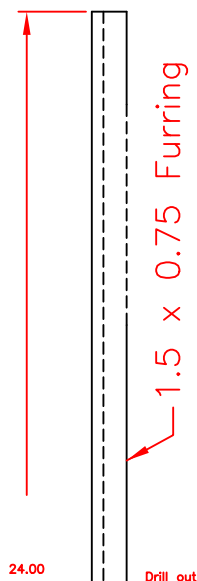
Back Slider Containment Plate (2)



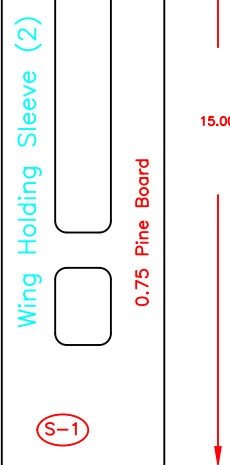
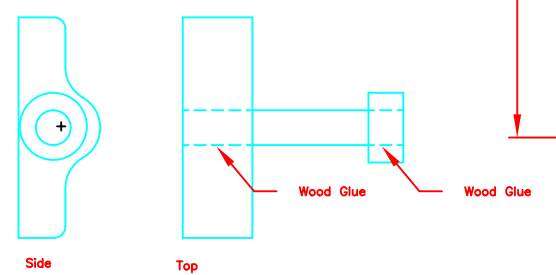
Front Vertical Leg (2)



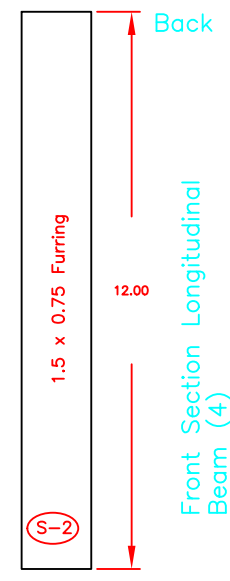
Front Leg Cross Beam



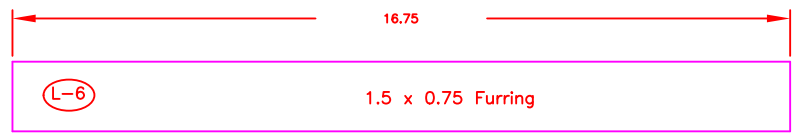
Stationary Sling Arm Assembly (Typ 4)



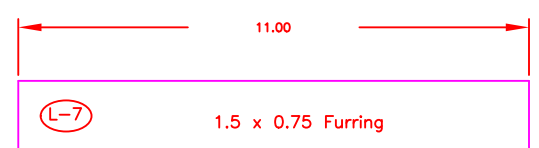
Wing Holding Sleeve (2)



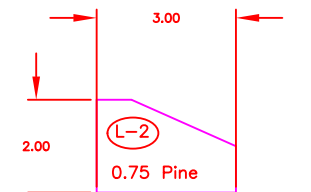
Front Section Longitudinal Beam (4)



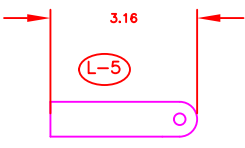
Back Leg Vertical (2)



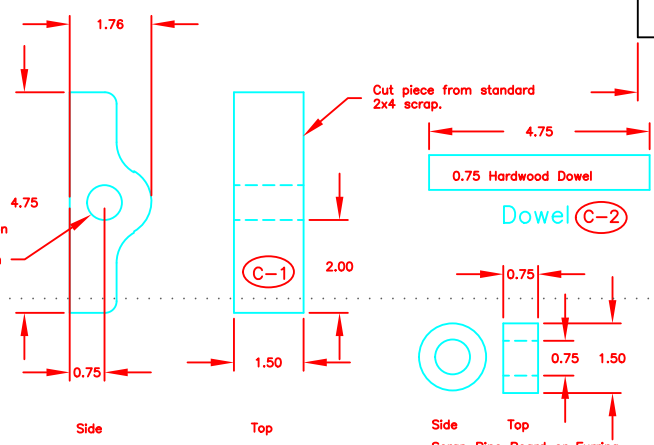
Back Leg Cross Beam



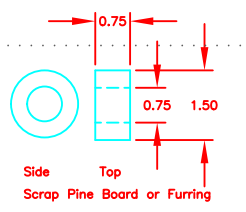
Front Leg Squarer (2)



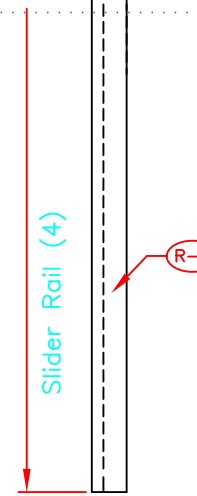
Front Leg Lock (2)



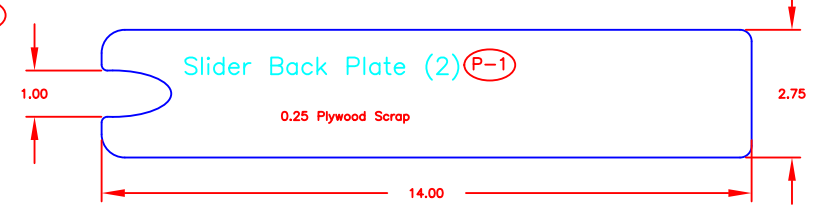
Dowel Mount



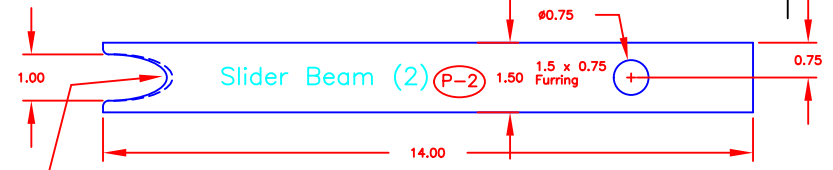
End Knob (C-3)



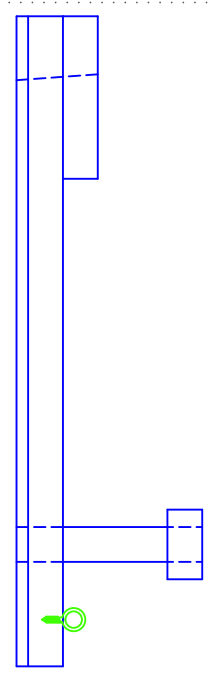
Slider Rail (4)



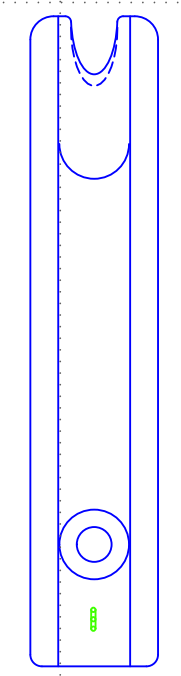
Slider Back Plate (2)



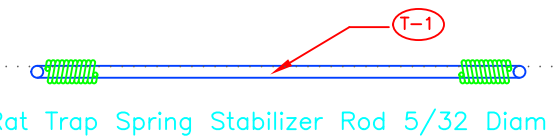
Slider Beam (2)



Slider Top View (2)



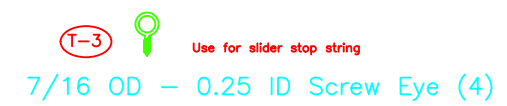
Slider Side View (2)



Rat Trap Spring Stabilizer Rod 5/32 Diam



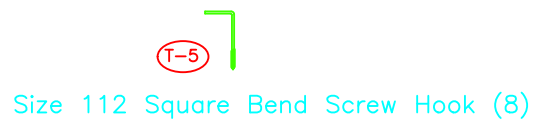
Rat Trap Spring from Common Rat Trap (2)



7/16 OD - 0.25 ID Screw Eye (4)



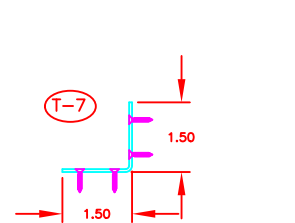
Size 214 Screw Eye (6)



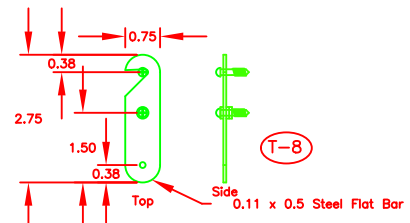
Size 112 Square Bend Screw Hook (8)



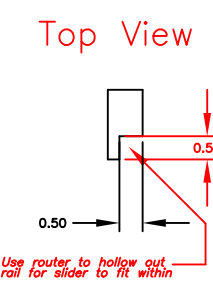
Hinge for Front Leg (2) and Trap Door (2)



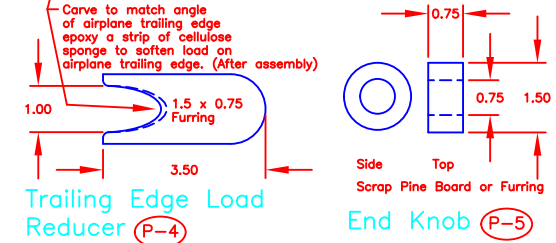
90 Deg Angle Bracket (4)



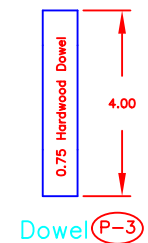
Release Hook (Typical 2)



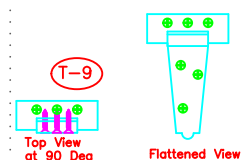
Trailing Edge Load Reducer (P-4)



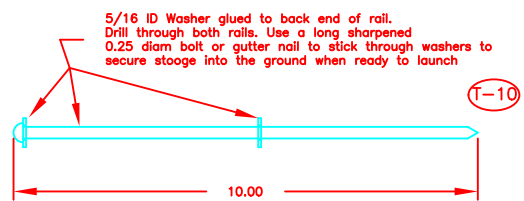
End Knob (P-5)



Dowel (P-3)



Back Leg Hinge (2)



5/16 ID Washer glued to back end of rail. Drill through both rails. Use a long sharpened 0.25 diam bolt or gutter nail to stick through washers to secure stooze into the ground when ready to launch.

SEIGE GUN STOOSSE	
Parts Templates	
Design: Patrick Moreland	
Date: April - July 1998	
Drawn: Patrick Moreland	
Date: July 3, 1998	
Scale: 1/4" = 1"	M-2

Plymouth Rubber Band: Size 107 - 7 x 1/16 x 5/8
Take two and cut each in half lengthwise.